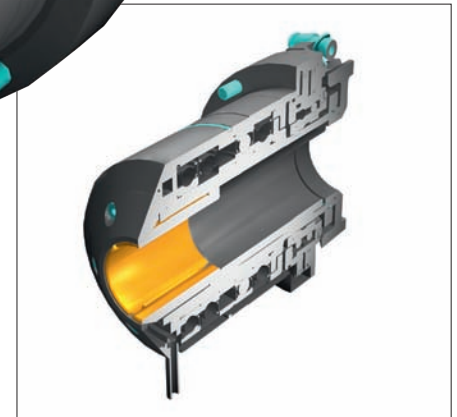
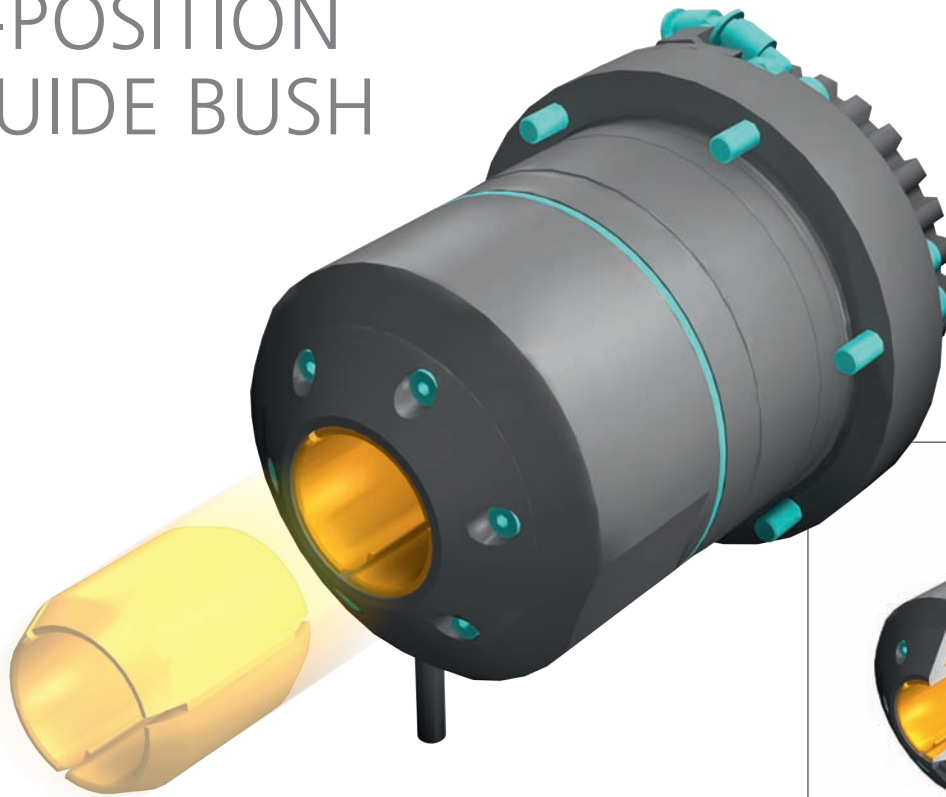




THINK PARTS THINK TORNOS



TORNOS 3-POSITION GUIDE BUSH



Among other operations, the Tornos three-position guide bush enables bars of material with an irregular surface to be machined without the need for regrinding. It can guide, clamp and open automatically, according to the requirements of the user. When clamping, the machine is made rigid for milling operations. In the open position, it is easy to load or extract the material. In the guiding position, it

is able to absorb significant differences in the diameter of materials while retaining its precision. The clamping force can be adapted to suit the different machining operations to be carried out. The double-taper guide bush collet offers an exceptional clamping length of 50 mm and guarantees perfectly parallel clamping.

Benefits

- 3 positions (adjusted, open, closed) controlled by M-code functions.
- Quick changing of double-taper guide bush collets via the front of the guide bush.
- Constant adjustment force for a better surface finish and longer tool service life.
- Larger roundness tolerances compared to standard guide bushes.
- The clamping length enables the bar to be moved back (45 mm) after preparatory machining, ensuring it remains gripped. This special feature is particularly useful when producing bone screws.
- Allows the use of h9 to h11 quality bars.
- The pneumatic guiding position easily clamps irregular bars.*
- Machining with the Y axis is guaranteed vibration-free with none of the other potential problems related to a guide bush which is not usually locked in place.
- Feeding: it is possible to clamp and open the bar in the guide bush, and move it backwards and forwards with the spindle and Z1 axis, which means material can be fed in without using a supporting tool holder.

* also useful for machining "sticky" material (titanium)

TECHNICAL SPECIFICATIONS

Bar passage
5 to 32 mm

Max. rotational speed
8000 rpm

Collets used
C42 special double-taper from Dünner

Max. clamping force at 5 bar
1462N

Setting and programming
using M-code functions open/close/adjust (guiding)

Setting the adjustment pressure
using pressure-reducing gauge from 1 to 5 bar

COMPATIBILITY

Sigma 20/Sigma 32/Deco 20e - 20a - 26e - 26a
retroactive adaptation possible